



Activity report 2015

Executive summary

Mission

Fundació ACE is an organization serving people who suffer from Alzheimer's Disease or other dementias and their caregivers. To do so, it develops actions in the areas of diagnosis, treatment, day-care, research, education and awareness.

Vision

At Fundació ACE we work so that someday **Alzheimer's becomes history.**

Values

Commitment to people.
Teamwork and interdependent work with an international perspective.
Pursuit of **professional excellence.**
Promoting positive attitudes and personal skills.
Quality and rigor in the work done.



Highlights

XX anniversary of Fundació ACE.

Venue of the annual meeting of the EADC (European Alzheimer's Disease Consortium).

The genetic biorepository reaches 10.000 samples.

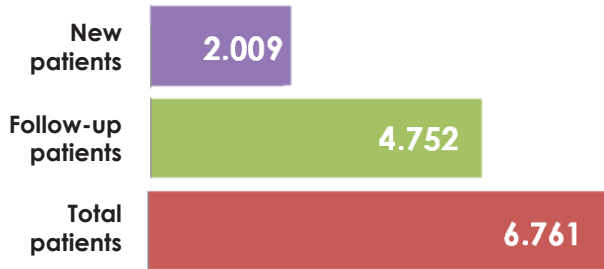
The caregiver help-line, a model for the Catalan Government.

Approval of the Code of Ethics.

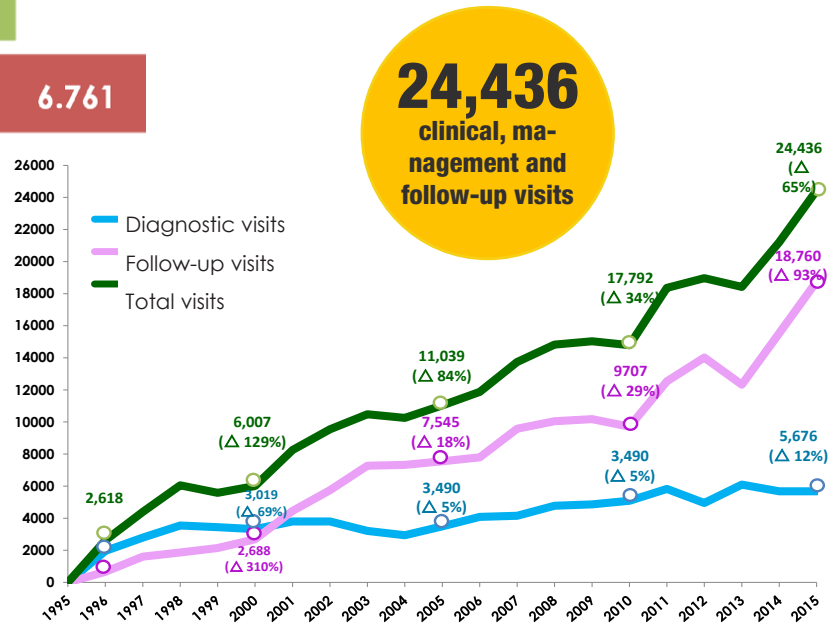
www.fundacioace.com



Diagnostic Unit

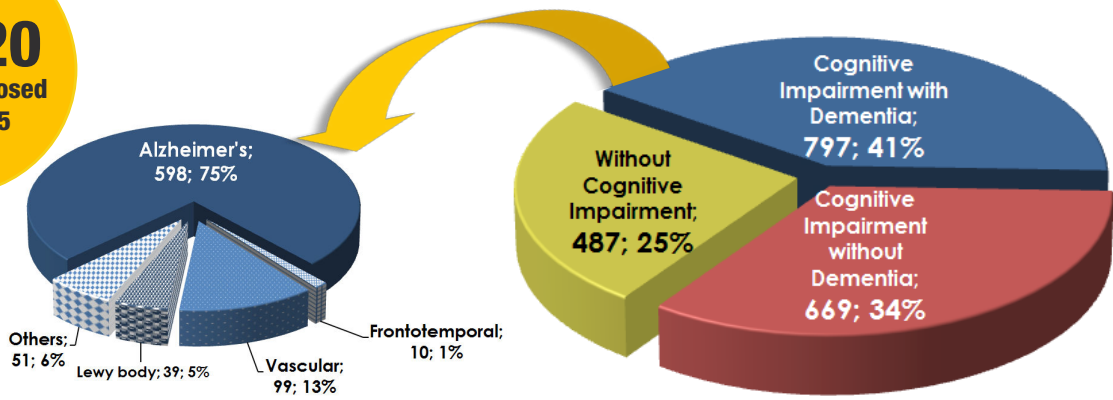


Diagnosis is obtained through **an interdisciplinary process that includes five visits to carry out a comprehensive assessment** and to design intervention proposals that consider the patient's overall needs. Specialized medical staff (neurologists, geriatricians and psychiatrists), specialists in neuropsychology, nursing and social work comprise the multidisciplinary team that carries out the specific evaluation of the patient.



19,720 people diagnosed since 1995

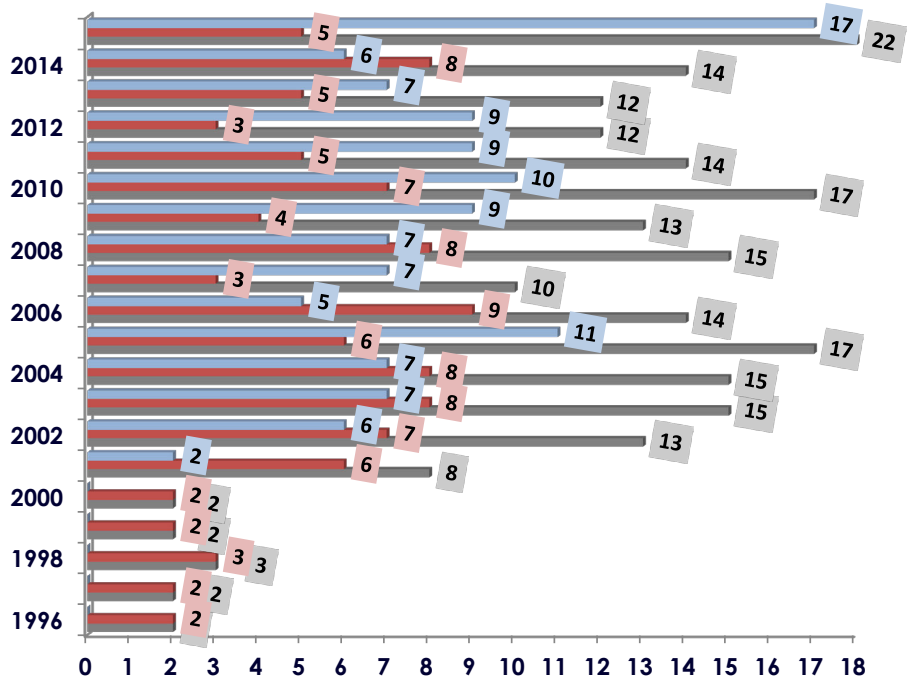
478 patients have changed to a diagnosis of dementia in 2015



Tipology of Diagnosis		Initial diagnosis	Final diagnosis
WITHOUT COGNITIVE IMPAIRMENT CDR 0	Without Impairment	994	1.001
	Subjective Memory Complaints	2.400	2.179
	TOTAL WITHOUT COGNITIVE IMPAIRMENT	3.394	3.180
COGNITIVE IMPAIRMENT WITHOUT DEMENTIA CDR 0,5	Mild Cognitive Impairment (MCI)	5.763	4.087
	Other cognitive deficits due to psychiatric diseases	267	264
	Déficits secundaris a malalties psiquiàtriques	151	151
TOTAL COGNITIVE IMPAIRMENT WITHOUT DEMENTIA	6.181	4.502	
COGNITIVE IMPAIRMENT WITH DEMENTIA CDR 1, 2, 3	Alzheimer's disease	7.697	9.168
	Frontotemporal Dementia (FTLD)	442	498
	Vascular Dementia (VD)	1.227	1.496
	Lewy body Dementia (LBD)	564	669
	Other neurodegenerative dementia	18	17
	TOTAL DEMENTIA	9.948	11.848
UNFINISHED	Others	47	44
	Unfinished withdrawals and deceded	150	146
	TOTAL UNFINISHED	197	190
TOTAL	19.720	19.720	

884 patients diagnosed with Alzheimer's Disease

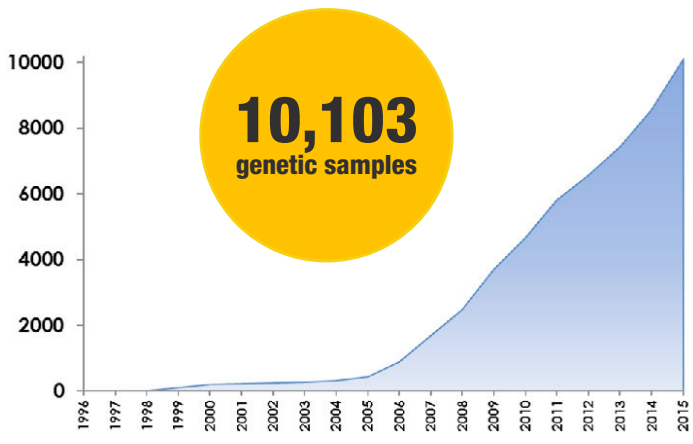
Research Unit



22
clinical trials carried out in 2015

Started in previous years
New in the year
Total active CTs

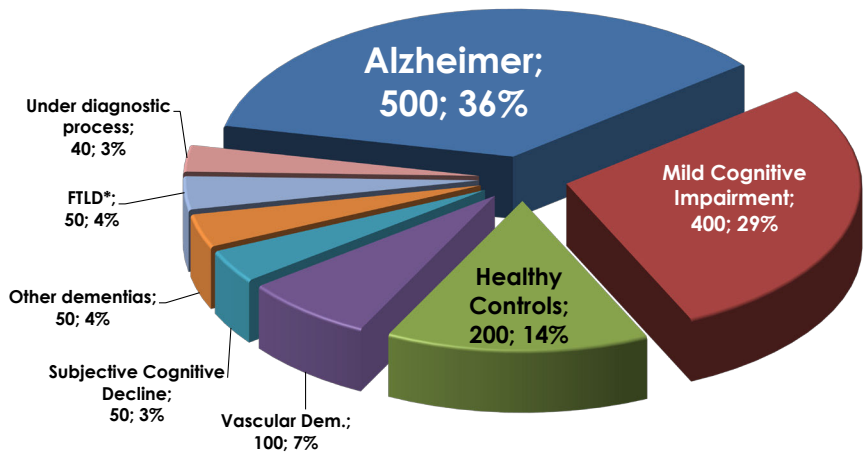
151.04
is the impact factor of the 19 articles published in 2015



Fundació ACE has created a digital database with information on more than 19,000 anonymous individuals. It has developed tools for extracting systematic clinical data and has collected **samples from over 10,000 people** to extract and analyze their DNA. This collection of genetic material and its associated patient data is the most extensive in our country and one of the largest in Europe.

This biorepository, together with the expertise of Fundació ACE's professionals, has led to significant collaborations with major international consortia related to genetic studies on aging. The Fundació is a partner in the transatlantic international consortium NEUROCHARGE 2 and in the meta-GWAS IGAP project (International Genomics of Alzheimer's Project) and the national consortium DEGESCO.

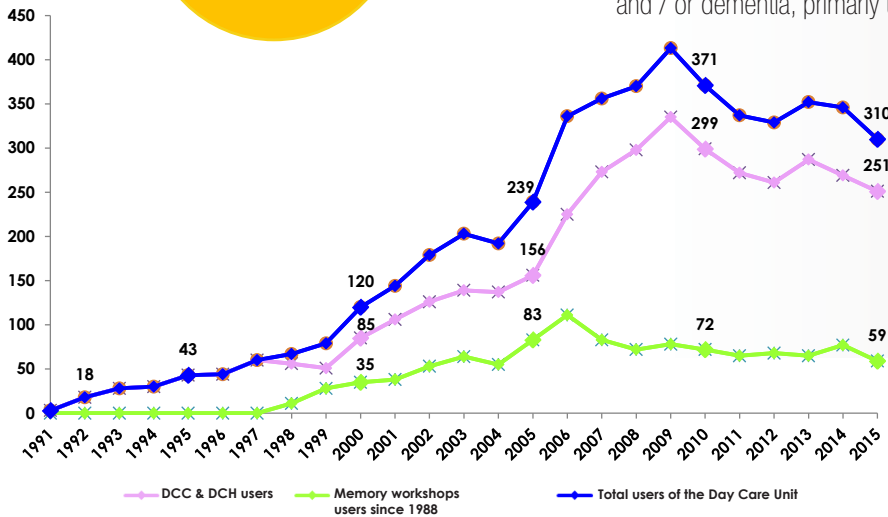
Typology of the samples



*FTLD: Fronto temporal lobar dementia

Day Care Unit

251
Day Care Centre and
Day Care Hospital
users in 2015

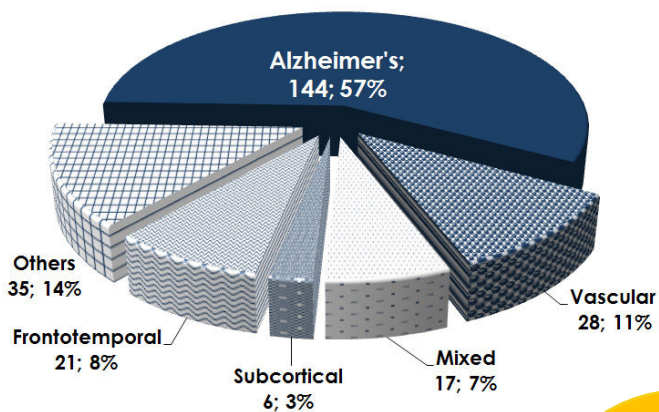


Day Care Centre (DCC) is aimed at people with Mild Cognitive Impairment and / or dementia. The centre has capacity for 80 users.

Day Care Hospital (DCH) is aimed at people with Mild Cognitive Impairment and / or dementia, primarily under 65. The hospital has capacity for 75 users.

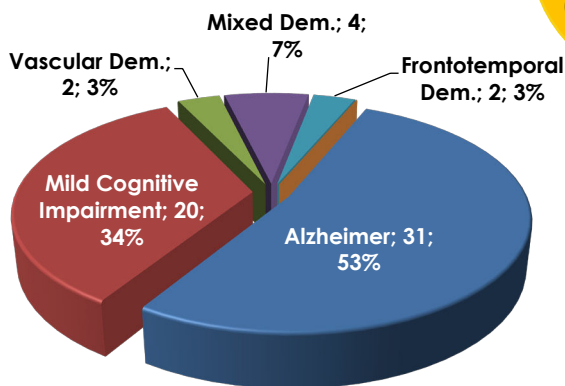
The attention is personalized in small groups, which are determined by the cognitive state.

Memory workshops (MW) are aimed at people with Mild Cognitive Impairment and / or early stages of dementia. They have capacity for 80 participants.



The aim of the Day Care Unit is to provide continuous therapeutic care in cognitive, physical, psychological and social, through the **Program of Integral Psychostimulation** (Tárraga L. & Boada M. 1990). The person with cognitive impairment and / or dementia and their family take advantage of a comprehensive therapeutic care with an interdisciplinary approach to meet their needs at early and moderate stages.

59
users of the me-
memory workshops;
31 of them with a
diagnosis of Alzhei-
mer's disease



AGE	DCC & DCG users		TOTAL
	♂	♀	
< 50	3	2	5
50-54	1	3	4
55-59	9	14	23
60-64	15	21	36
65-69	23	7	30
70-74	11	22	33
75-79	10	24	34
80-84	19	19	38
> 85	20	28	48
Total	111	140	251

www.fundacioace.com

